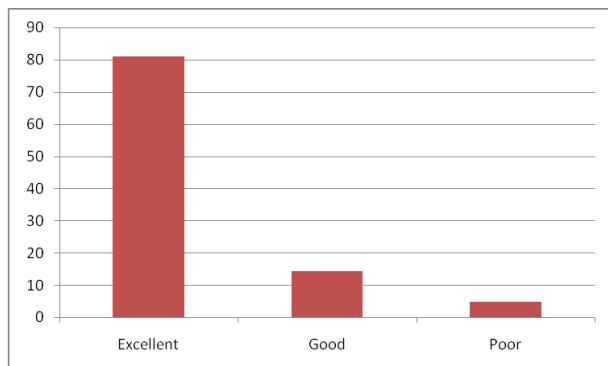


Graphical analysis of Alumni Feedback

On facilities

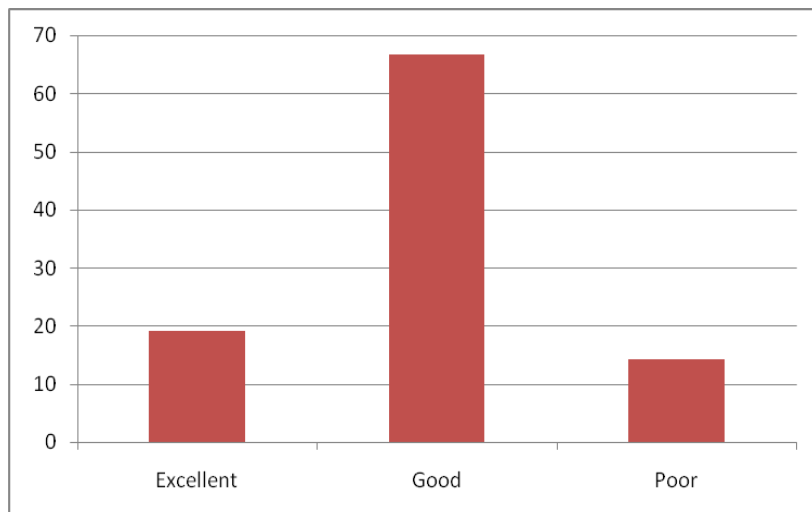
For 1 Question asked on facilities by 21 students

S.No	Level	Number of questions in range	% of questions in range
1	Excellent	17	80.95
2	Good	3	14.28
3	Poor	1	4.76



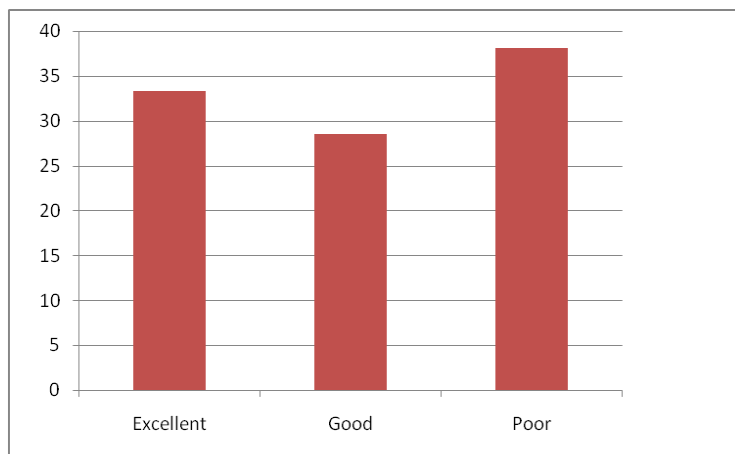
For 2 Question asked on facilities by 21 students

S.No	Level	Number of questions in range	% of questions in range
1	Excellent	4	19.04
2	Good	14	66.66
3	Poor	3	14.28



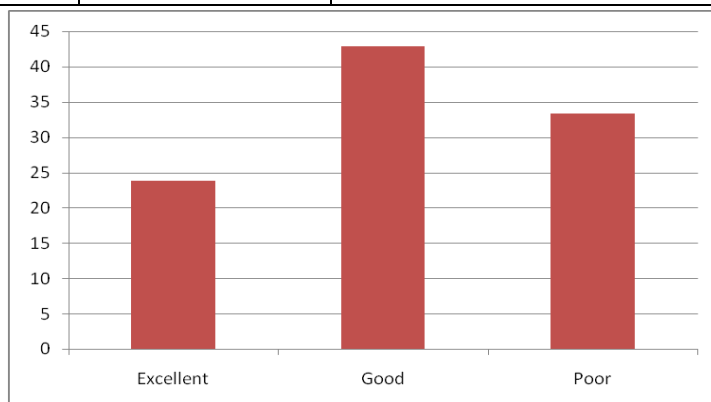
For 3 Question asked on facilities by 21 students

S.No	Level	Number of questions in range	% of questions in range
1	Excellent	7	33.33
2	Good	6	28.57
3	Poor	8	38.09



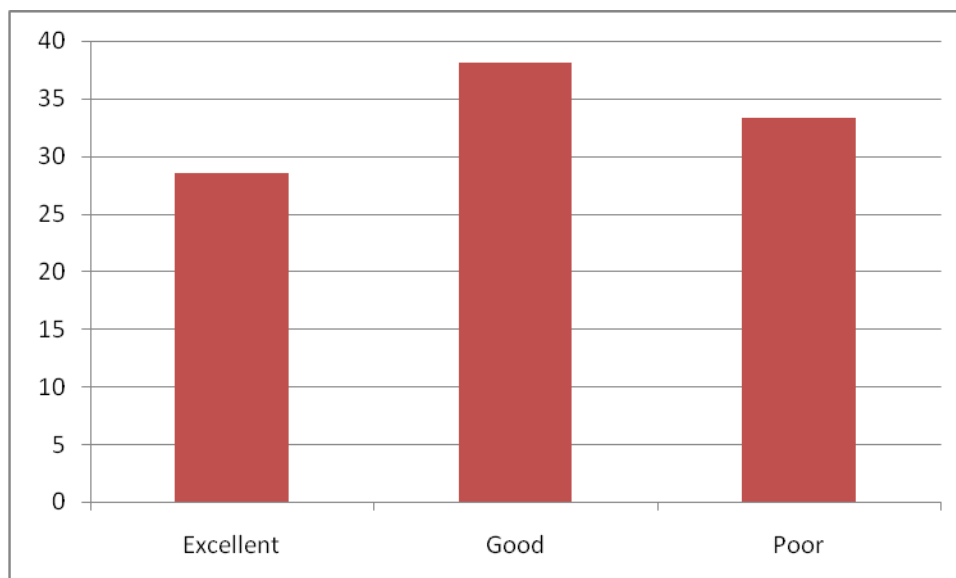
For 4 Question asked on facilities by 21 students

S.No	Level	Number of questions in range	% of questions in range
1	Excellent	5	23.80
2	Good	9	42.85
3	Poor	7	33.33



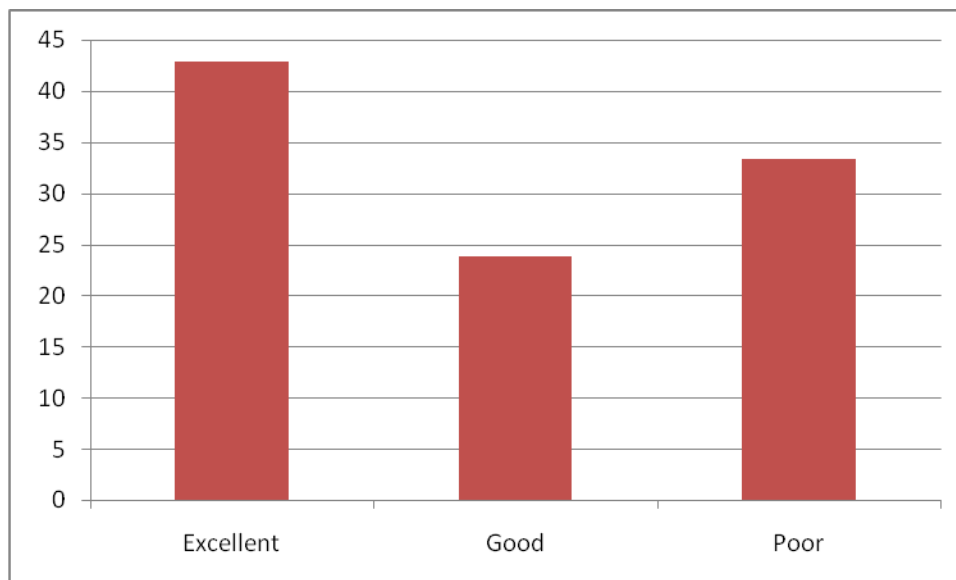
For 5 Question asked on facilities by 21 students

S.No	Level	Number of questions in range	% of questions in range
1	Excellent	6	28.57
2	Good	8	38.09
3	Poor	7	33.33



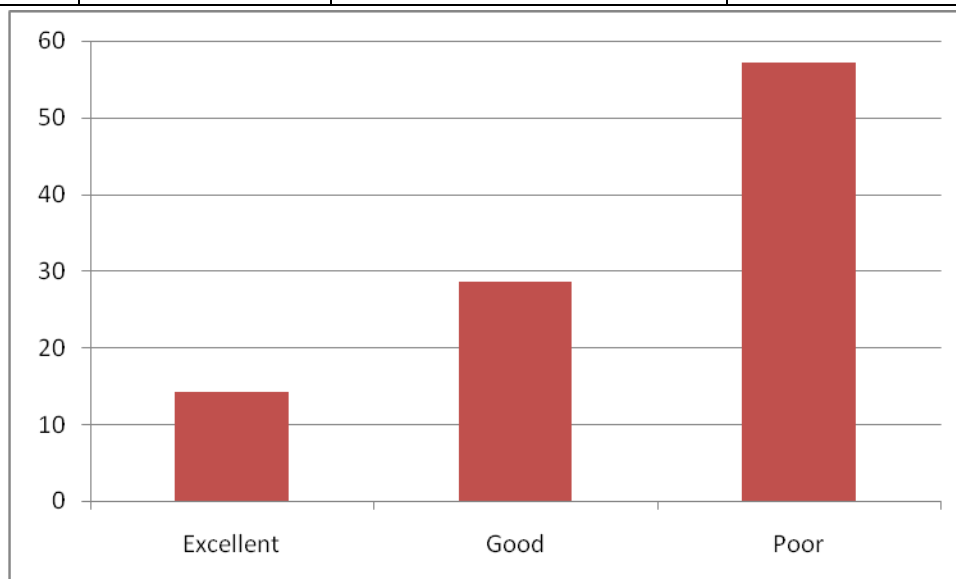
For 6 Question asked on facilities by 21 students

S.No	Level	Number of questions in range	% of questions in range
1	Excellent	9	42.85
2	Good	5	23.80
3	Poor	7	33.33



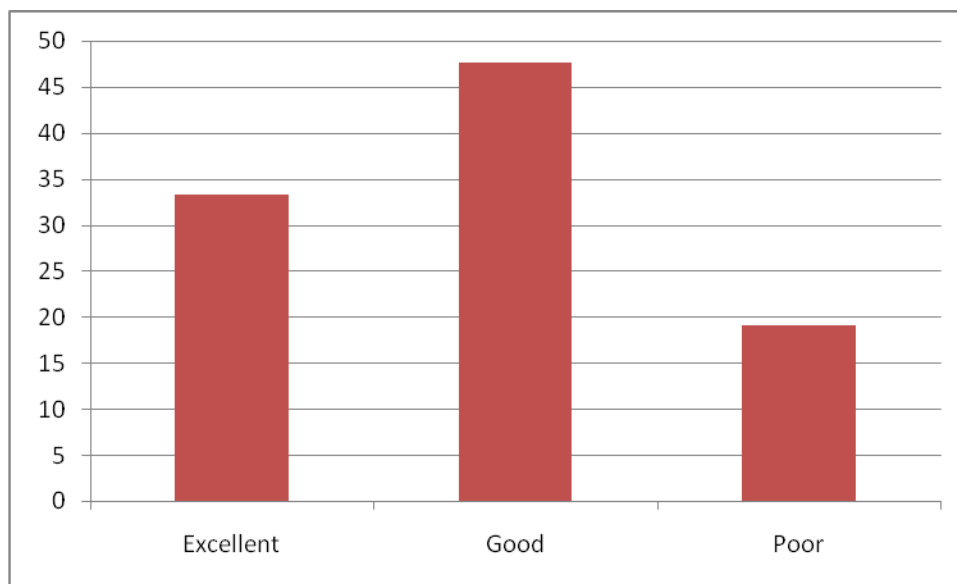
For 7 Question asked on facilities by 21 students

S.No	Level	Number of questions in range	% of questions in range
1	Excellent	3	14.28
2	Good	6	28.57
3	Poor	12	57.14



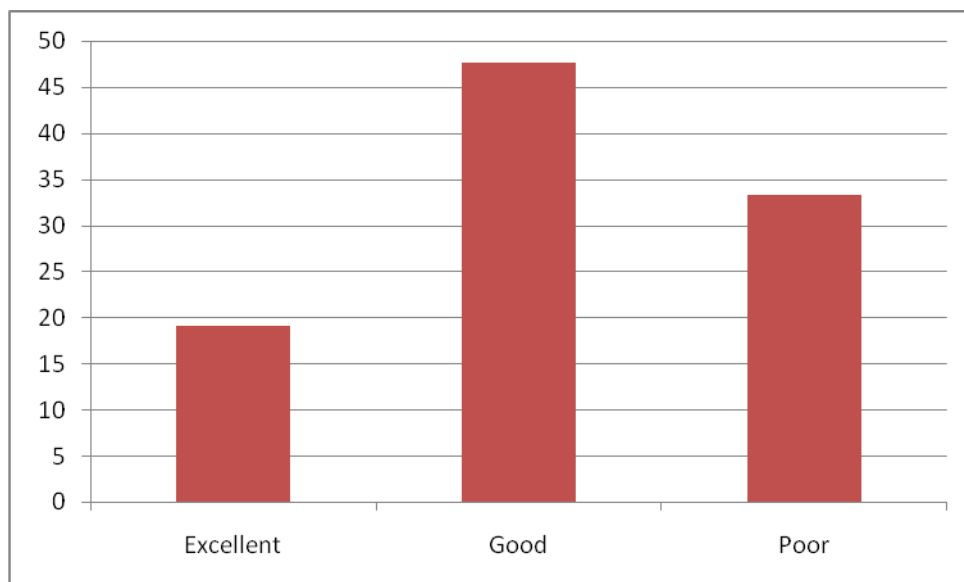
For 8 Question asked on facilities by 21 students

S.No	Level	Number of questions in range	% of questions in range
1	Excellent	7	33.33
2	Good	10	47.61
3	Poor	4	19.04



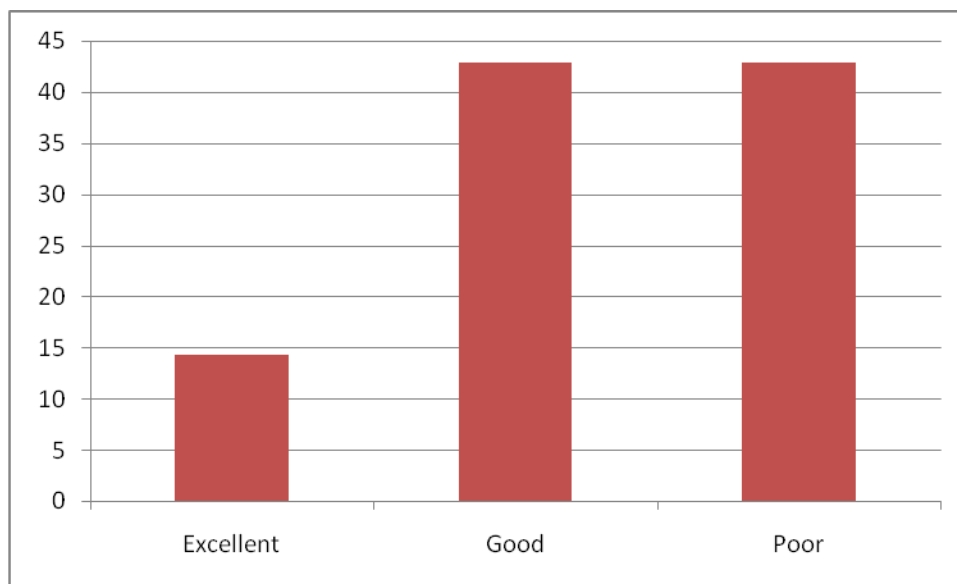
For 9 Question asked on facilities by 21 students

S.No	Level	Number of questions in range	% of questions in range
1	Excellent	4	19.04
2	Good	10	47.61
3	Poor	7	33.33



For 10 Question asked on facilities by 21 students

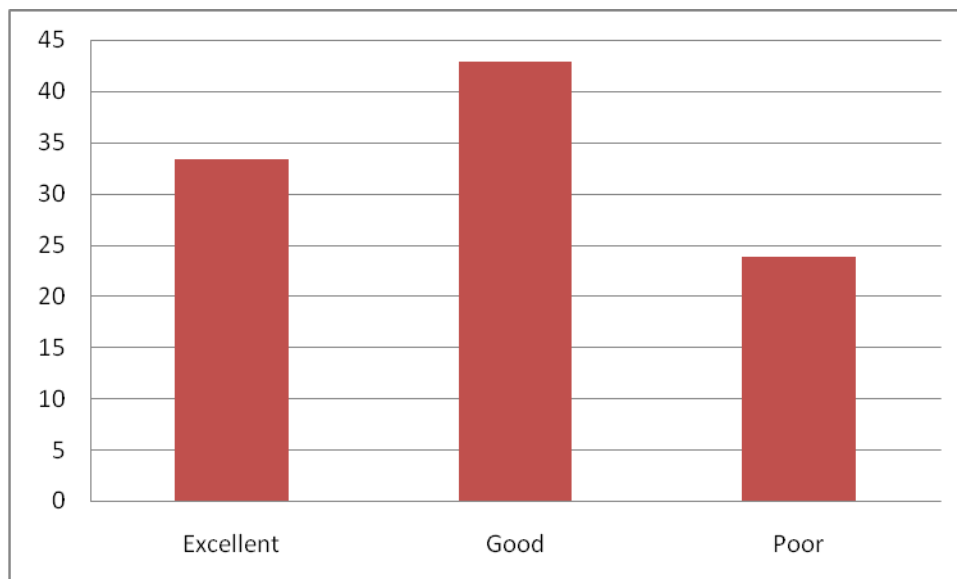
S.No	Level	Number of questions in range	% of questions in range
1	Excellent	3	14.28
2	Good	9	42.85
3	Poor	9	42.85



On Curriculum

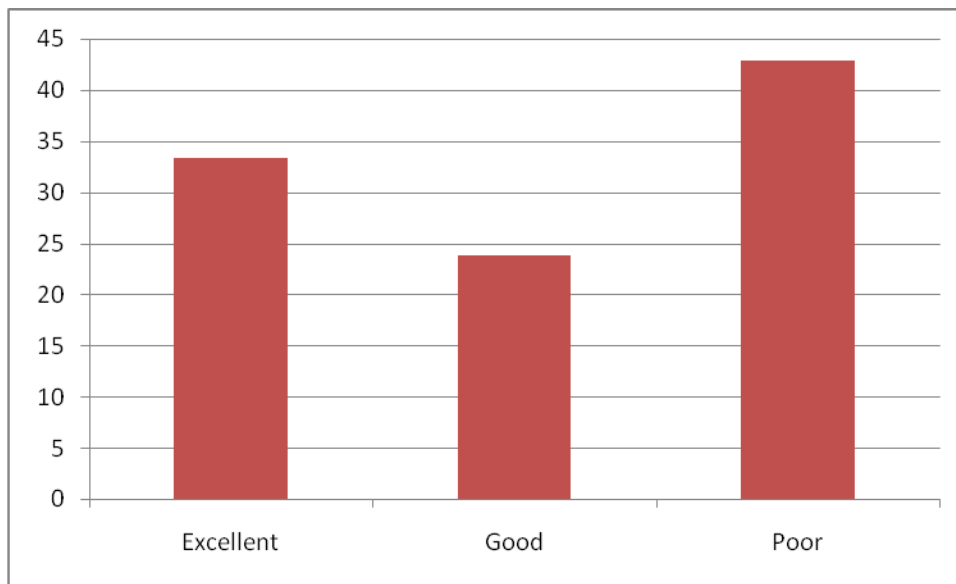
For 11 Question asked on curriculum by 21 students

S.No	Level	Number of questions in range	% of questions in range
1	Excellent	7	33.33
2	Good	9	42.85
3	Poor	5	23.80



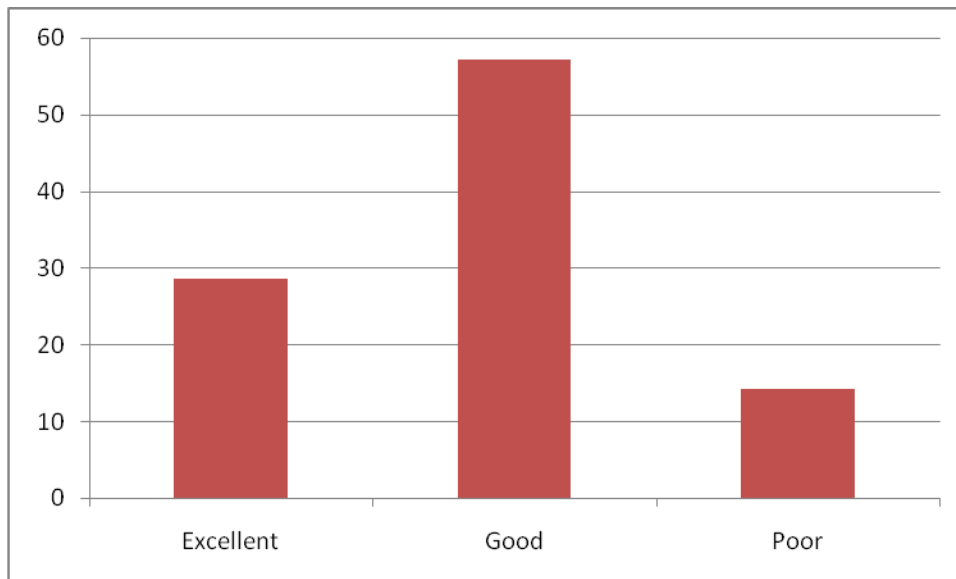
For 12 Question asked on curriculum by 21 students

S.No	Level	Number of questions in range	% of questions in range
1	Excellent	7	33.33
2	Good	5	23.80
3	Poor	9	42.85



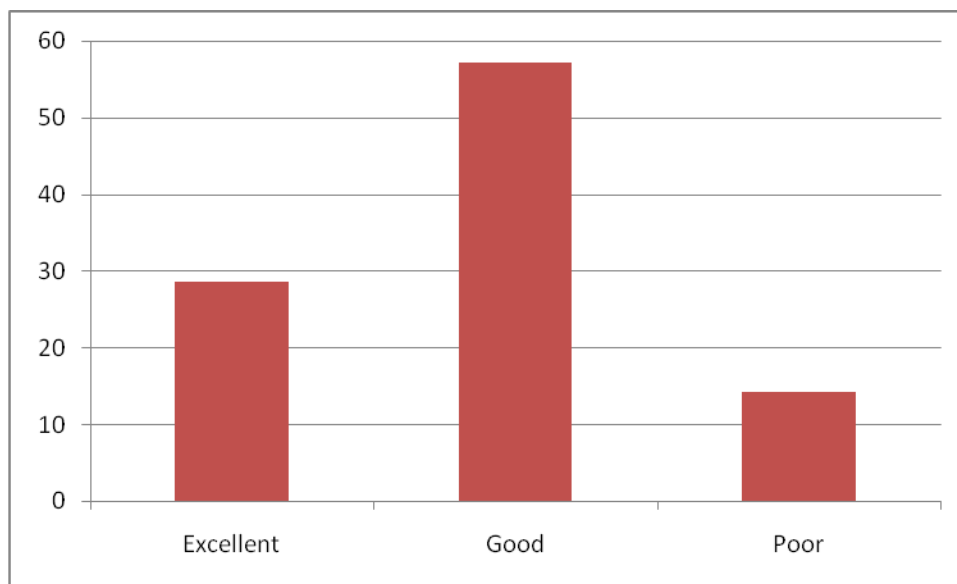
For 13 Question asked on curriculum by 21 students

S.No	Level	Number of questions in range	% of questions in range
1	Excellent	6	28.57
2	Good	12	57.14
3	Poor	3	14.28



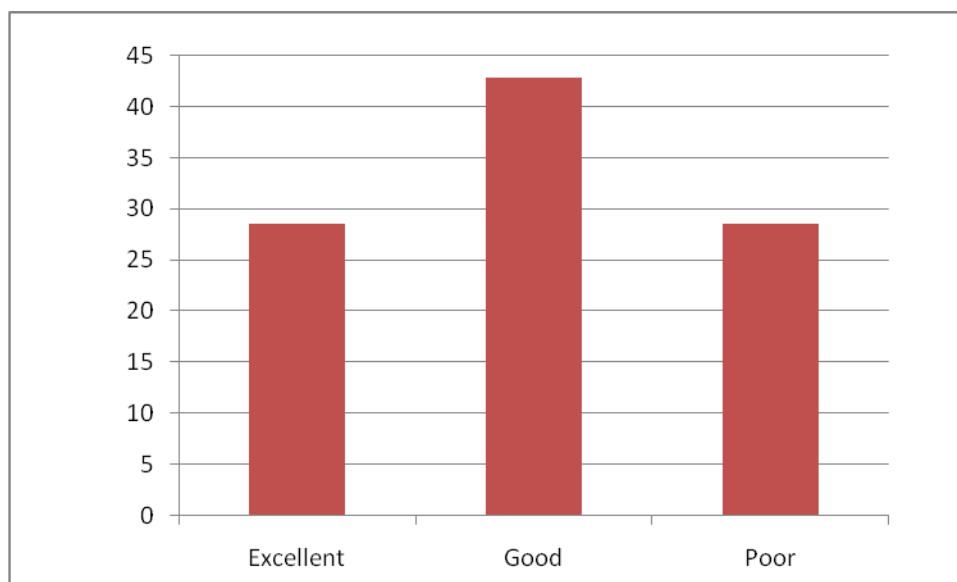
For 14 Question asked on curriculum by 21 students

S.No	Level	Number of questions in range	% of questions in range
1	Excellent	2	9.52
2	Good	11	52.38
3	Poor	8	38.09



For 15 Question asked on curriculum by 21 students

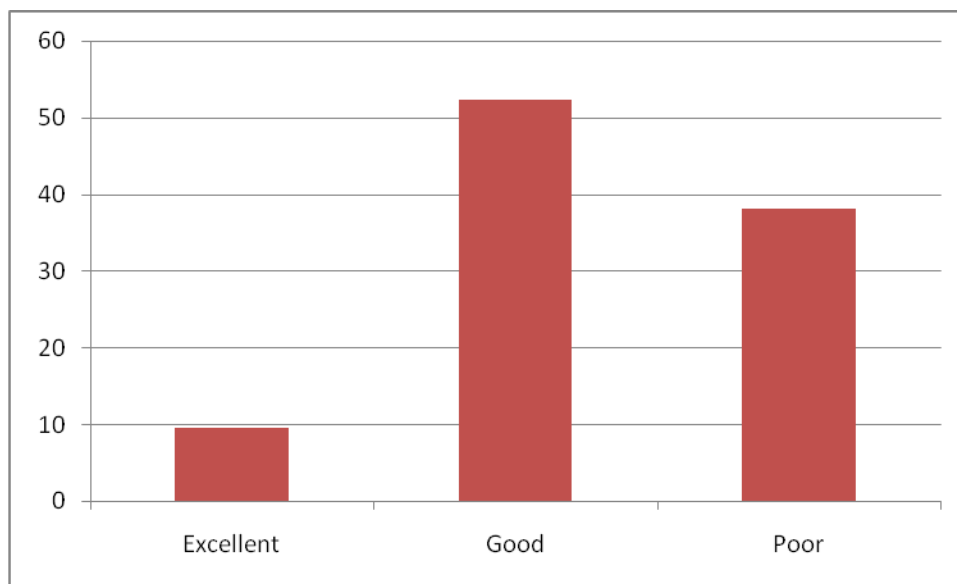
S.No	Level	Number of questions in range	% of questions in range
1	Excellent	6	28.57
2	Good	9	42.85
3	Poor	6	28.57



On PROGRAM OUTCOMES

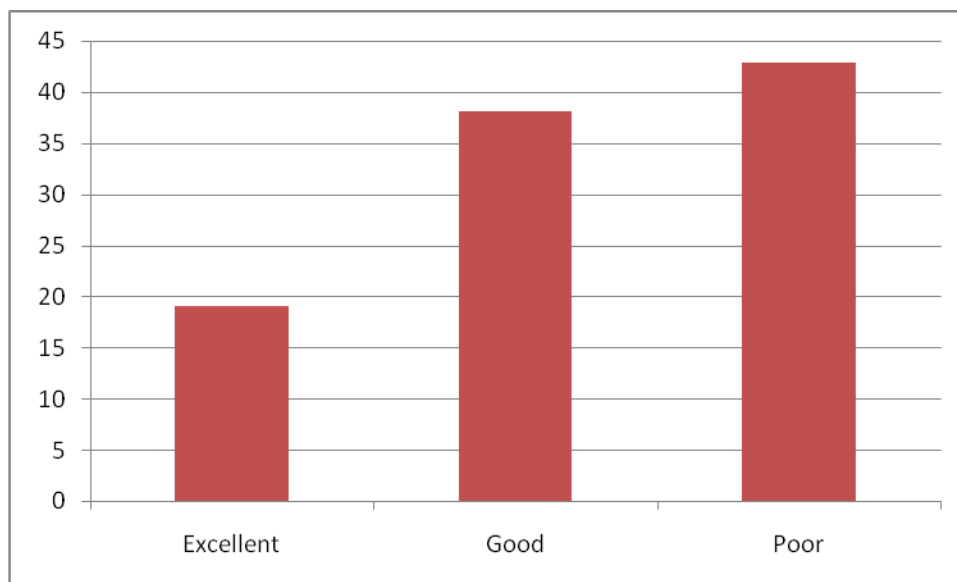
For 1 Question asked on program outcomes by 21 students

S.No	Level	Number of questions in range	% of questions in range
1	Excellent	2	9.52
2	Good	11	52.38
3	Poor	8	38.09



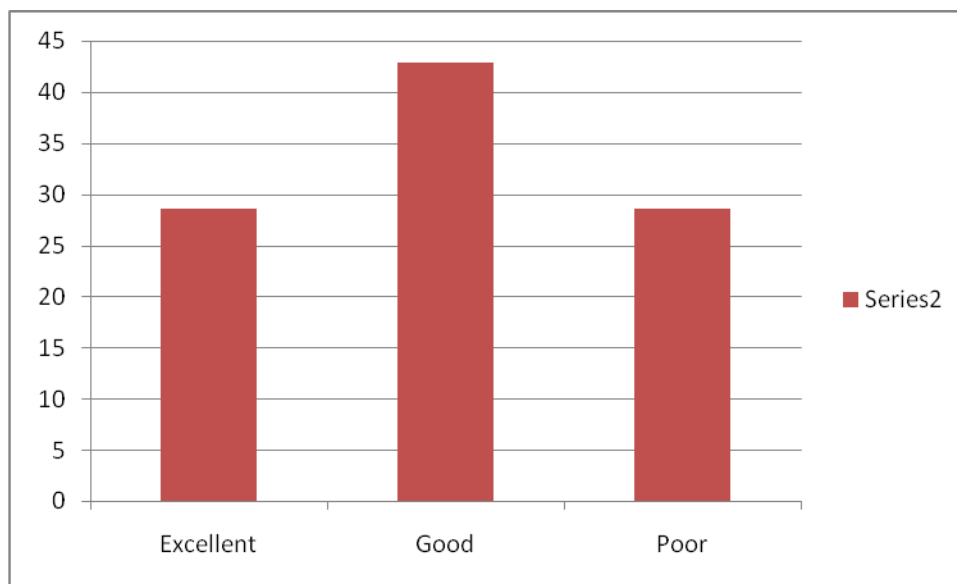
For 2 Question asked on program outcomes by 21 students

S.No	Level	Number of questions in range	% of questions in range
1	Excellent	4	19.04
2	Good	8	38.09
3	Poor	9	42.85



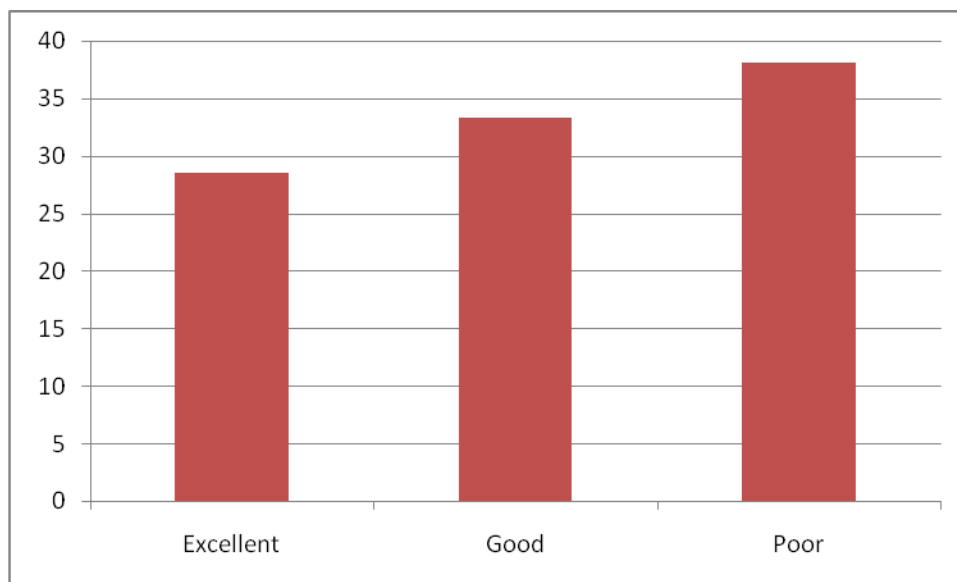
For 3 Question asked on program outcomes by 21 students

S.No	Level	Number of questions in range	% of questions in range
1	Excellent	6	28.57
2	Good	9	42.85
3	Poor	6	28.57



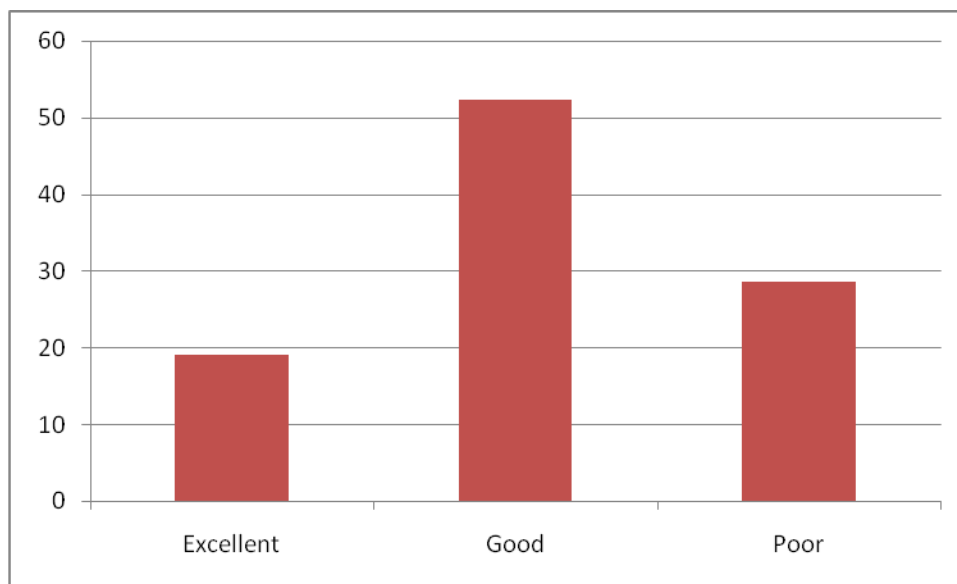
For 4 Question asked on program outcomes by 21 students

S.No	Level	Number of questions in range	% of questions in range
1	Excellent	6	28.57
2	Good	7	33.33
3	Poor	8	38.09



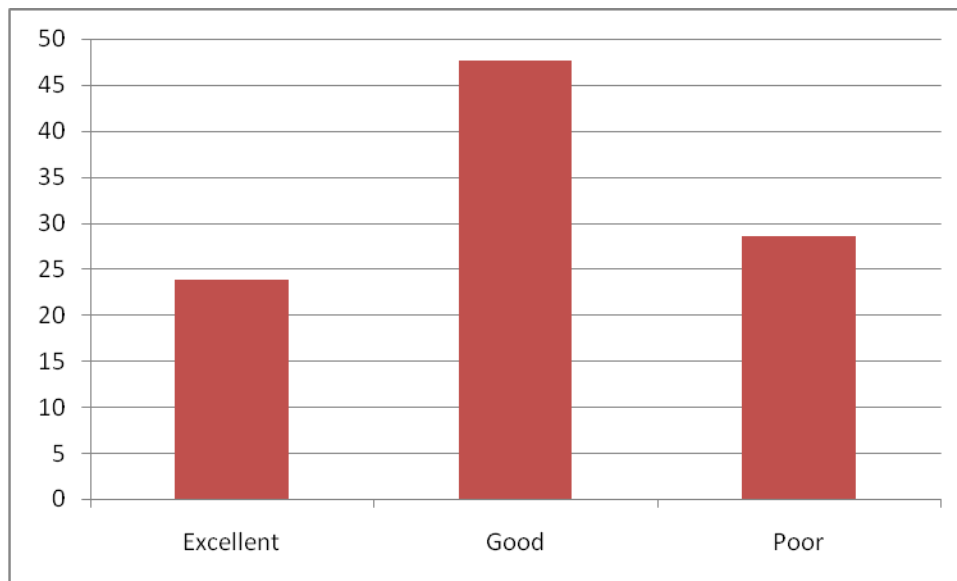
For 5 Question asked on program outcomes by 21 students

S.No	Level	Number of questions in range	% of questions in range
1	Excellent	4	19.04
2	Good	11	52.30
3	Poor	6	28.57



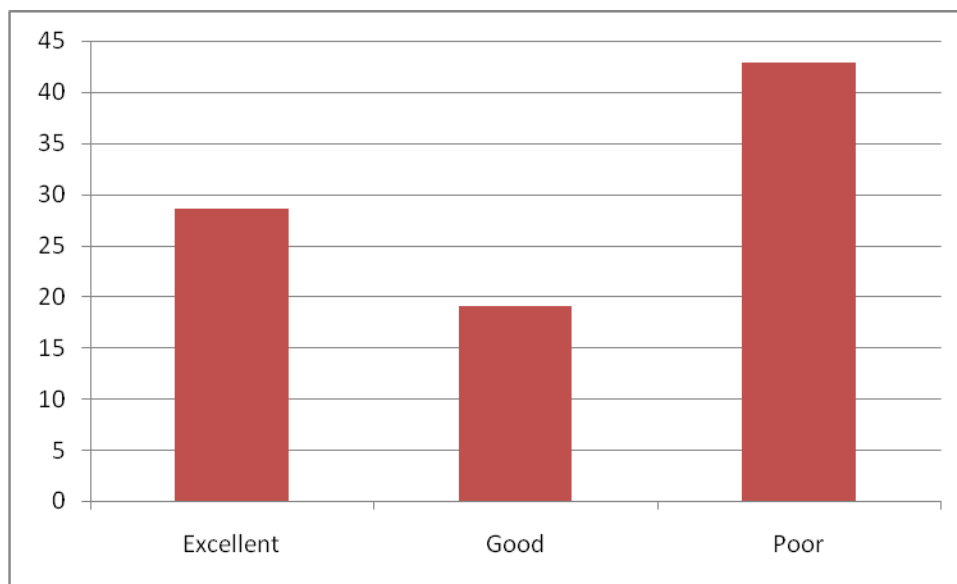
For 6 Question asked on program outcomes by 21 students

S.No	Level	Number of questions in range	% of questions in range
1	Excellent	5	23.80
2	Good	10	47.61
3	Poor	6	28.57



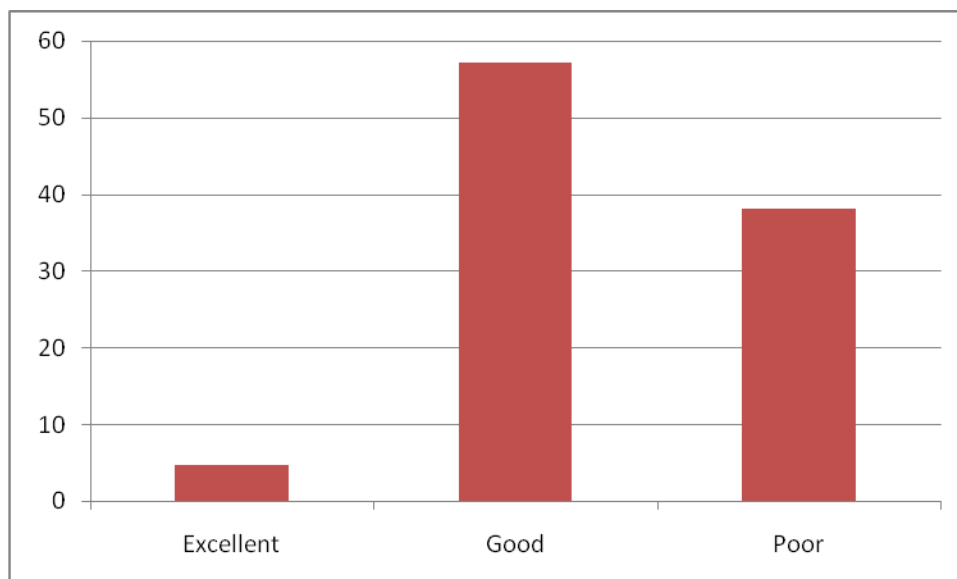
For 7 Question asked on program outcomes by 21 students

S.No	Level	Number of questions in range	% of questions in range
1	Excellent	6	28.57
2	Good	4	19.04
3	Poor	9	42.85



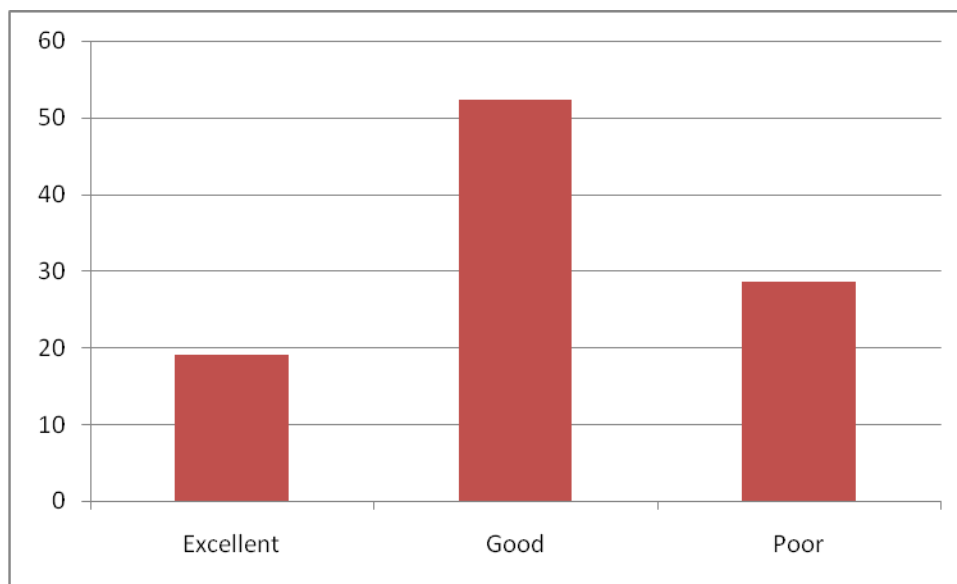
For 8 Question asked on program outcomes by 21 students

S.No	Level	Number of questions in range	% of questions in range
1	Excellent	1	4.76
2	Good	12	57.14
3	Poor	8	38.09



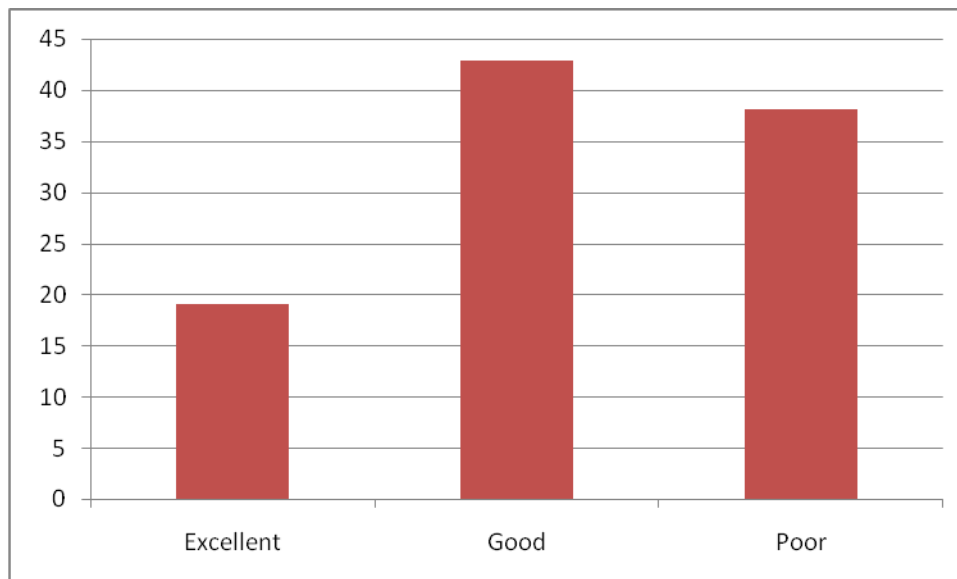
For 9 Question asked on program outcomes by 21 students

S.No	Level	Number of questions in range	% of questions in range
1	Excellent	4	19.04
2	Good	11	52.30
3	Poor	6	28.57



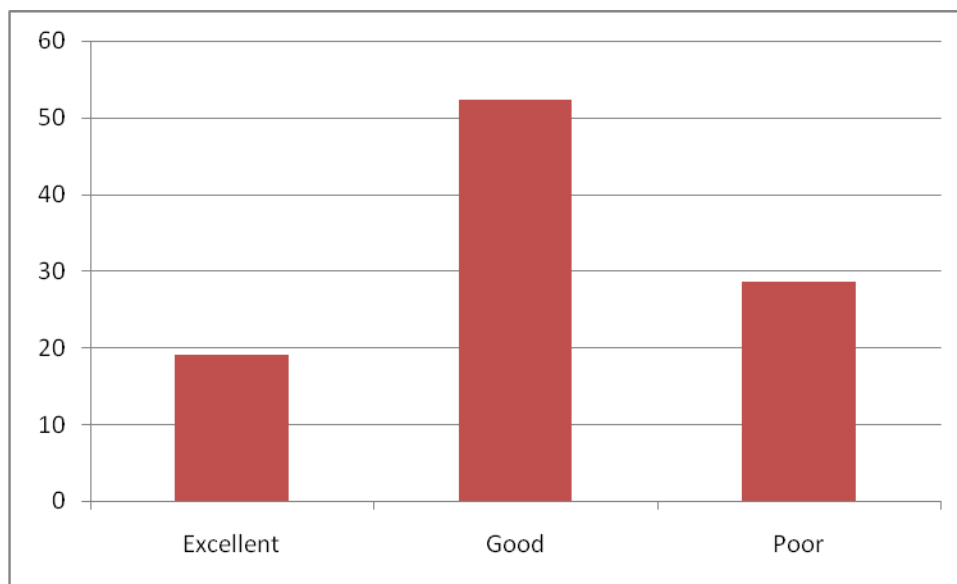
For 10 Question asked on program outcomes by 21 students

S.No	Level	Number of questions in range	% of questions in range
1	Excellent	4	19.04
2	Good	9	42.85
3	Poor	8	38.09



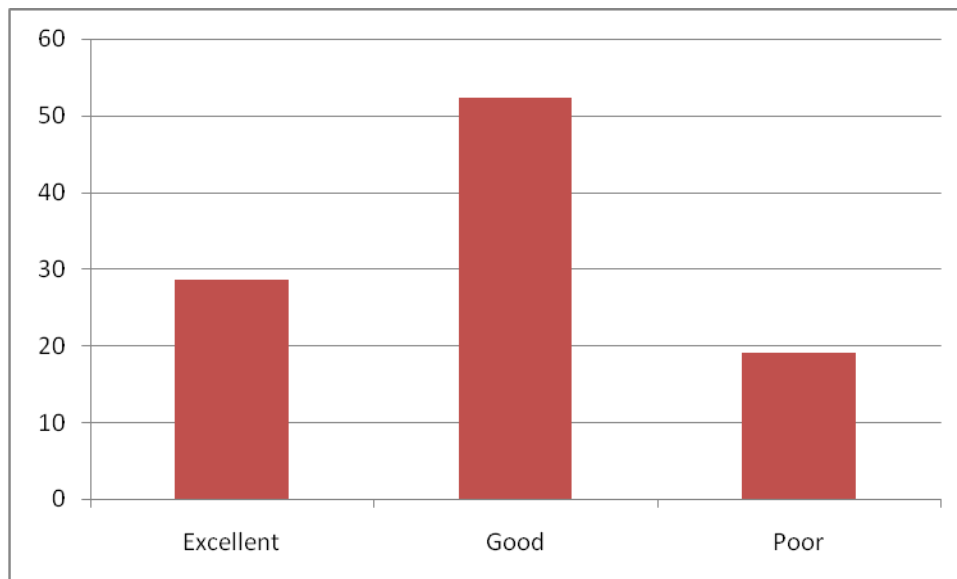
For 11 Question asked on program outcomes by 21 students

S.No	Level	Number of questions in range	% of questions in range
1	Excellent	4	19.04
2	Good	11	52.30
3	Poor	6	28.57



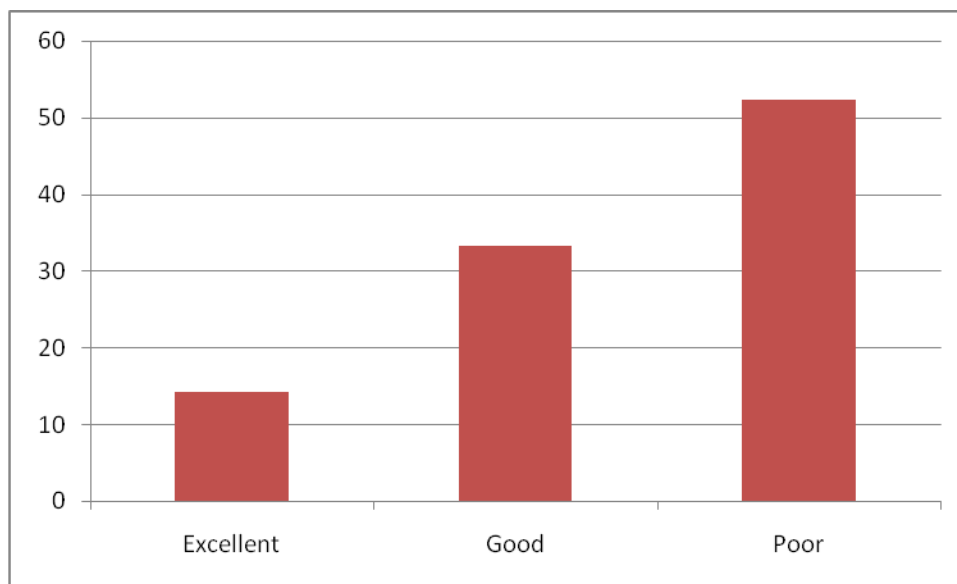
For 12 Question asked on program outcomes by 21 students

S.No	Level	Number of questions in range	% of questions in range
1	Excellent	6	28.57
2	Good	11	52.30
3	Poor	4	19.04



For 13 Question asked on program outcomes by 21 students

S.No	Level	Number of questions in range	% of questions in range
1	Excellent	3	14.28
2	Good	7	33.33
3	Poor	11	52.38



For 14 Question asked on program outcomes by 21 students

S.No	Level	Number of questions in range	% of questions in range
1	Excellent	2	9.52
2	Good	11	52.38
3	Poor	8	38.09

